



# Can Humans have a positive action on the biodiversity?

Work realized by the pupils of the middle school George SAND of La Châtre



INSTITUT  
FRANÇAIS  
DE L'ÉDUCATION

MÉDIATION  
DES SAVOIRS



ENS DE LYON

# Our fieldwork



Choose a tree



Measure its perimeter





# Our fieldwork



Try to determine its height by various methods





# Our fieldwork



Look for indications to determine its species

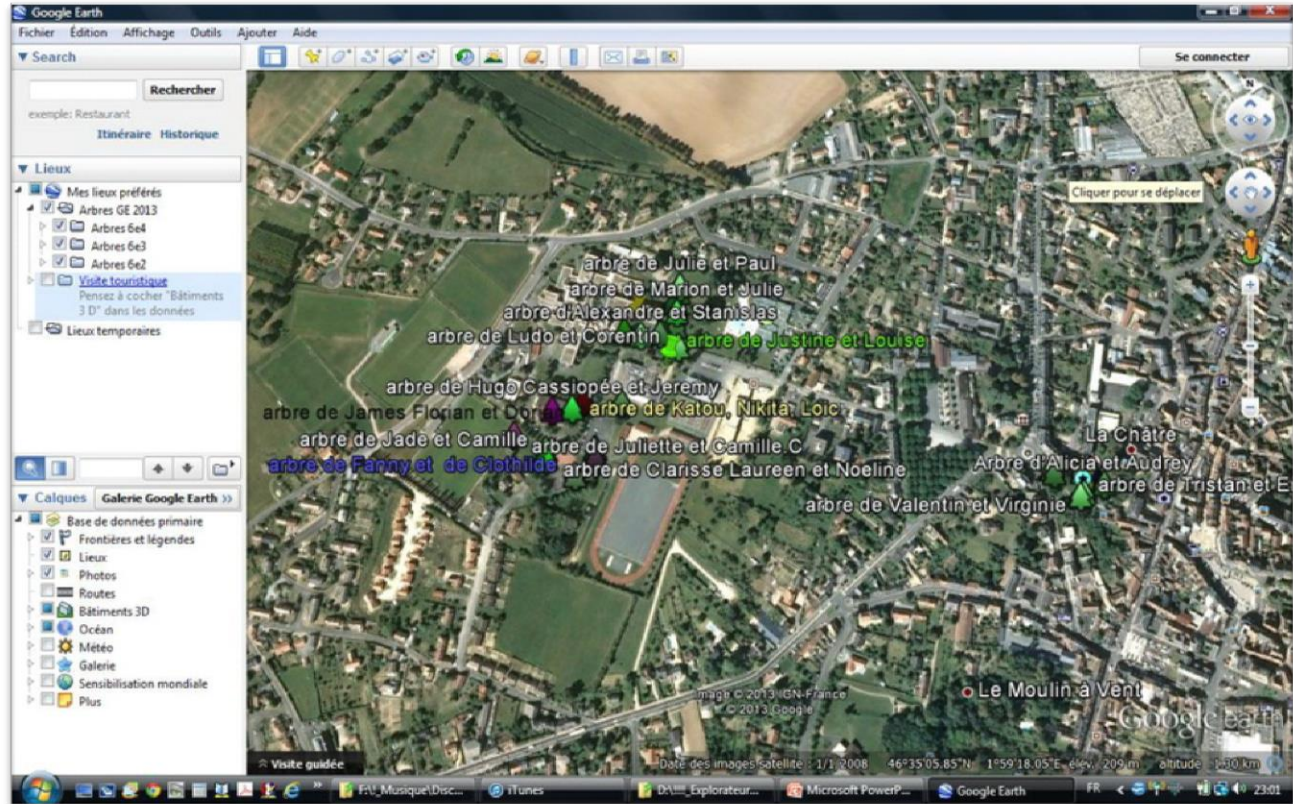




# Our class work



Use the software  
 Google Earth to  
 locate all the  
 studied trees



# Our class work



Try to determine the species of our tree and its geographical origin





# Our class work



Use the website of Graines d'explorateurs  
to note our results



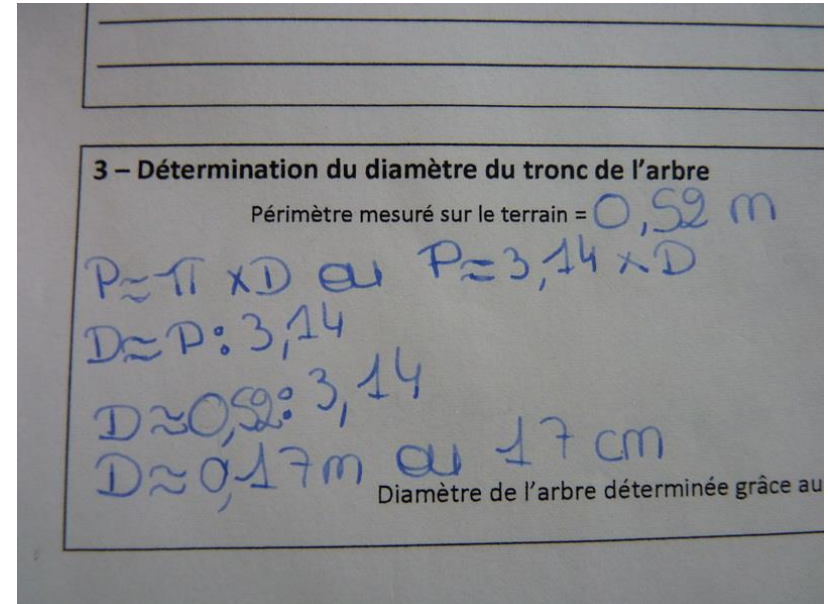
# Our math class work



Determine the height of our tree with a photo



Determine the diameter from the perimeter



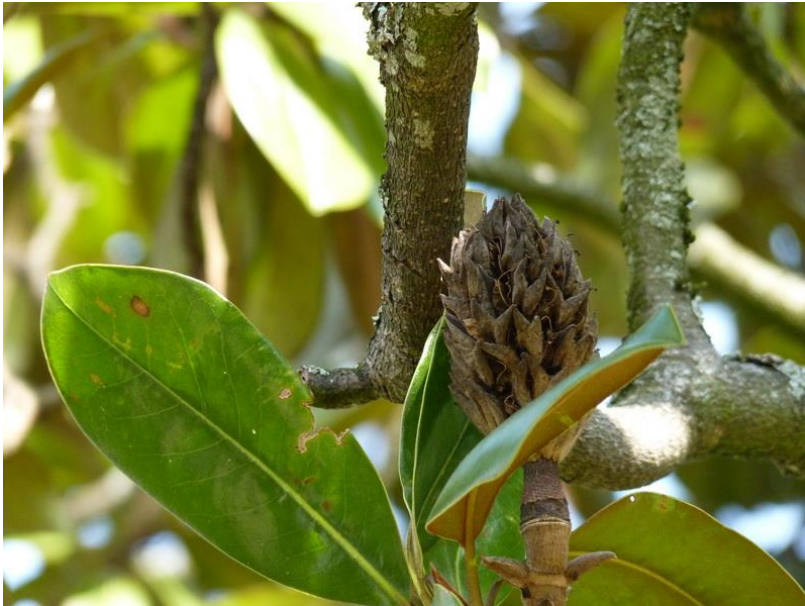


# Our conclusions



More than half of our trees comes from other continents

 **Magnolia grandiflora**



 **Cerisier du Japon**



# Our conclusions



Humans managed to maintain  
rare species



Humans created new  
species







We all thank the ifé for our participation in the Graines d'explorateur project.

